

WEST FORK



United States
Department of
Agriculture

Forest
Service

Northeastern Area
State & Private
Forestry

180 Canfield Street
Morgantown, WV 26505-3101

File Code: 3400
Date: February 13, 2002

Mr. Ron Waller
U.S. Army Corps of Engineers
Louisville District
P.O. Box 59
Attn: ORLOR-R/Ron Waller
Louisville, KY 40201

Dear Mr. Waller:

Summaries of the 1983-2001 gypsy moth trapping program conducted at four Army Corps of Engineers sites within the Louisville District are enclosed for your information (Table 1). Also enclosed are maps showing the trap locations at each site (Figures 1a-1d). The purpose of the trapping program is to monitor low-level gypsy moth populations and to help determine when more intensive survey methods should be employed.

William H. Harsha Lake was the only Corps site to have an increase in male gypsy moths trapped in 2001. William H. Harsha Lake trapped 4 male moths compared to 2 moths in 2000. The other three sites had a slight decrease in moths trapped in 2001. Based on these results, gypsy moth populations will not impact the forest resources at these Corps sites in the immediate future.

Figure 2 shows the 2000 and 2001 Slow-the-Spread (STS) project trapping results in Ohio. Figures 3a-3d show the 2001 STS trapping results in vicinity of each Corps site. The STS trapping results indicated similar results in the vicinity of the Corps projects. Please visit the STS web site at <http://www.ento.vt.edu/sts/> for more information regarding the STS program.

It is important for Corps personnel continue looking for other gypsy moth life stages such as larvae, pupae and/or egg masses while performing their normal duties. Please visit our GM Digest web page at <http://fhpr8.srs.fs.fed.us/wv/gmdigest.html> for publications that can be helpful with the identification of these life stages, as well as a good resource for general gypsy moth information.

RECEIVED

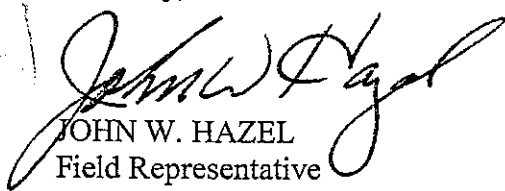
MAR 14 2002

HAMILTON COUNTY
PARK DISTRICT



We would like to continue the trapping program at the same intensity in 2001. Thank you for your continued cooperation and if you have any questions regarding these results, please call Karen Felton at (304)285-1556.

Sincerely,



JOHN W. HAZEL
Field Representative

Enclosures

Cc: Noel Schneeberger, AO
Melissa Grosvenor, Caesar Creek Lake
Brian Menker, Clarence J. Brown Dam
Steve Lee, Miami River Area ✓
Steve Shulte, West Fork Lake
David Zagurney, William Harsha Lake
Bill Pound, OHDA

JWH/KDF/blm

KDF/blm

Figure 1.- - Summary of the 1983-2000 gypsy moth trapping results, Louisville District, U.S. Army Corps of Engineers

Caesar Creek Lake (Warren and Clinton Counties, OH)

Year	Number of Traps	Total Moths Caught	Positive Catch Trap Number
1983	15	0	--
1984	15	0	--
1985	19	0	--
1986	19	0	--
1987	19	0	--
1988	19	0	--
1989	19	0	--
1990	19	0	--
1991	15	0	--
1992	15	1	# 2
1993	15	0	--
1994	14	0	--
1995	14	1	# 11
1996	15	0	--
1997	14	1	# 5
1998	13	0	--
1999	14	6	#1, 5, 8, 12
2000	14	19	#3, 4, 6, 7, 10, 11-14
2001	14	10	--

Clarence J. Brown (Clark County, OH)

Year	Number of Traps	Total Moths Caught	Positive Catch Trap Number
1983	10	0	--
1984	10	0	--
1985	10	0	--
1986	10	0	--
1987	10	0	--
1988	10	0	--
1989	10	0	--
1990	10	4	# 2, 3, 4
1991	10	0	--
1992	10	0	--
1993	10	1	# 9
1994	13	0	--
1995	13	1	# 11
1996	13	0	--
1997	13	23	# 2-5, 7, 10-13
1998	13	7	# 3, 9, 11, 13
1999	13	25	All except # 2, 3
2000	13	9	#4, 8, 9, 11, 12
2001	13	2	--

West Fork Lake (Hamilton County, OH)

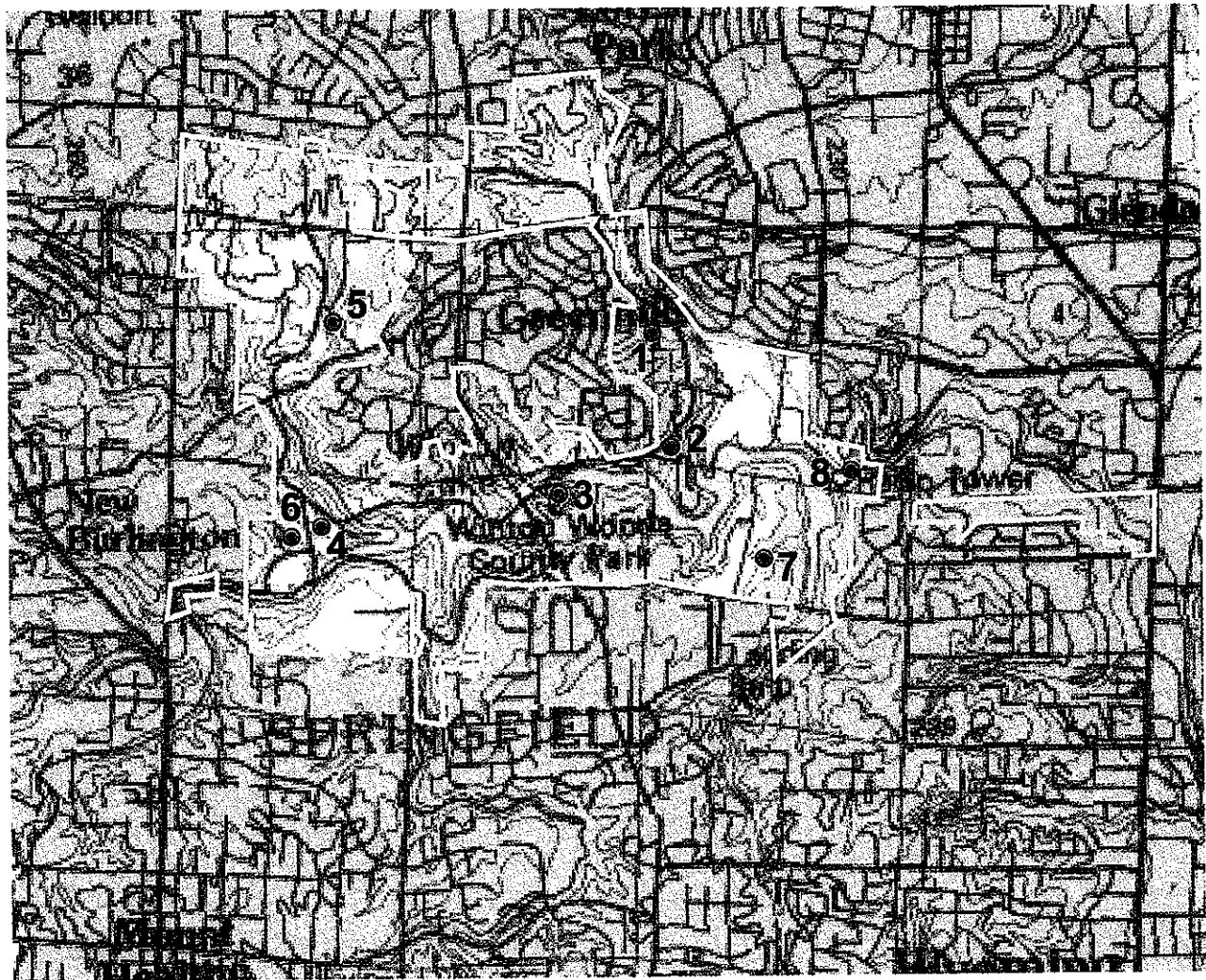
Year	Number of Traps	Total Moths Caught	Positive Catch Trap Number
1983	10	0	--
1984	10	0	--
1985	10	0	--
1986	10	0	--
1987	10	0	--
1988	10	0	--
1989	10	0	--
1990	10	0	--
1991	10	0	--
1992	10	0	--
1993	10	0	--
1994	10	0	--
1995	10	0	--
1996	10	0	--
1997	10	0	--
1998	10	0	--
1999	8	10	All except # 7
2000	8	9	All except #2, 6
2001	8	3	--

William H. Harsha Lake (Clermont County, OH)

Year	Number of Traps	Total Moths Caught	Positive Catch Trap Number
1983	15	0	--
1984	15	0	--
1985	15	0	--
1986	15	0	--
1987	15	0	--
1988	15	0	--
1989	15	0	--
1990	15	0	--
1991	11	0	--
1992	11	0	--
1993	11	0	--
1994	11	0	--
1995	12	0	--
1996	12	0	--
1997	12	0	--
1998	12	0	--
1999	12	14	# 1, 2, 3, 5, 7, 11, 12
2000	12	2	#2
2001	12	4	--



Figure 1c.--2001 gypsy moth trapping results at West Fork Lake.



LEGEND

- Trap locations
- Approximate Project boundary

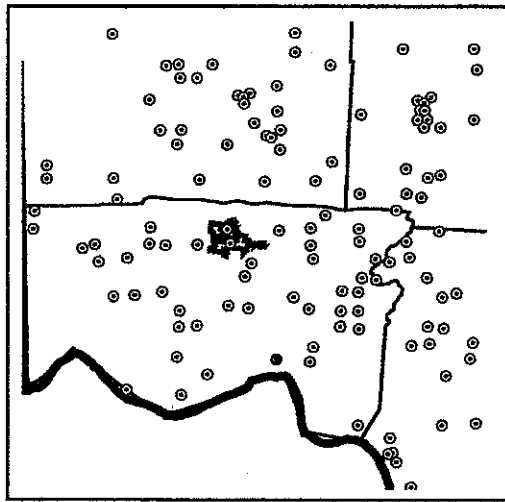


Figure 3c.--2001 Slow-the-Spread trapping results in the proximity of West Fork Lake.



LEGEND

2001 STS trap locations

- 1 - 5 moths/trap
- ◉ 6 - 10 moths/trap
- 11 - 25 moths/trap
- ◉ 26 - 50 moths/trap
- ◉ 51 - 100 moths/trap
- ◉ 101 - 200 moths/trap
- ◉ 201 - 600 moths/trap
- 601 - 1289 moths/trap

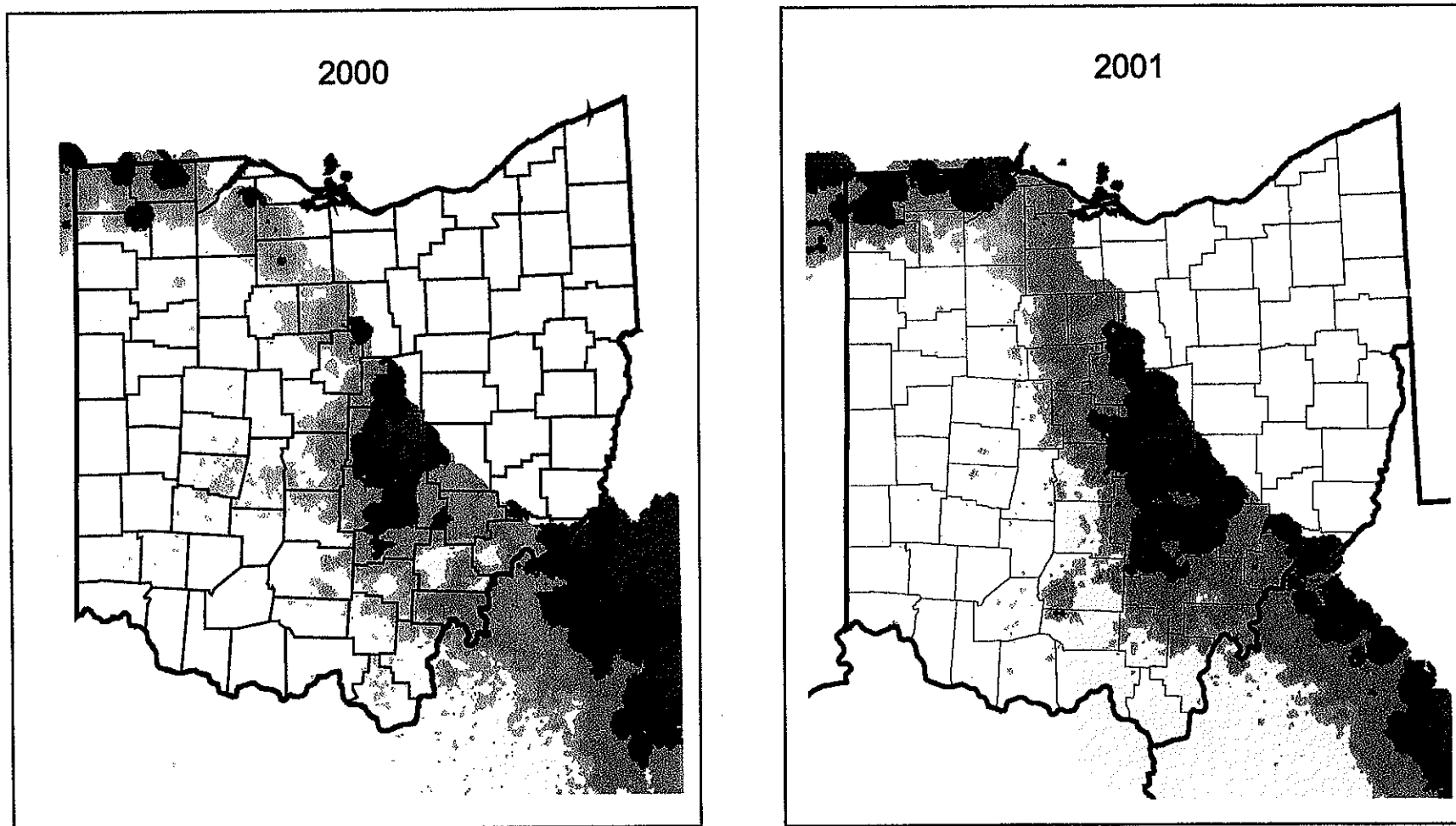
— Approximate Project boundary

□ Counties

0.5 0 0.5 Miles



Figure 2.--2000 and 2001 gypsy moth Slow-the-Spread trapping activities showing the change in the gypsy moth distribution in Ohio.



LEGEND

Moth counts in traps		Counties	State boundaries
< 1 moth	31-100 moths	[White box]	[Black outline]
1-3 moths	101-300 moths		
4-10 moths	+ 300 moths		
11-30 moths			

Source:
Virginia Gypsy Moth
Information Systems Lab
Virginia Tech
Blacksburg, VA

<http://www.ento.vt.edu/STS/>